

Standard Thermocouple Connector Socket

Features

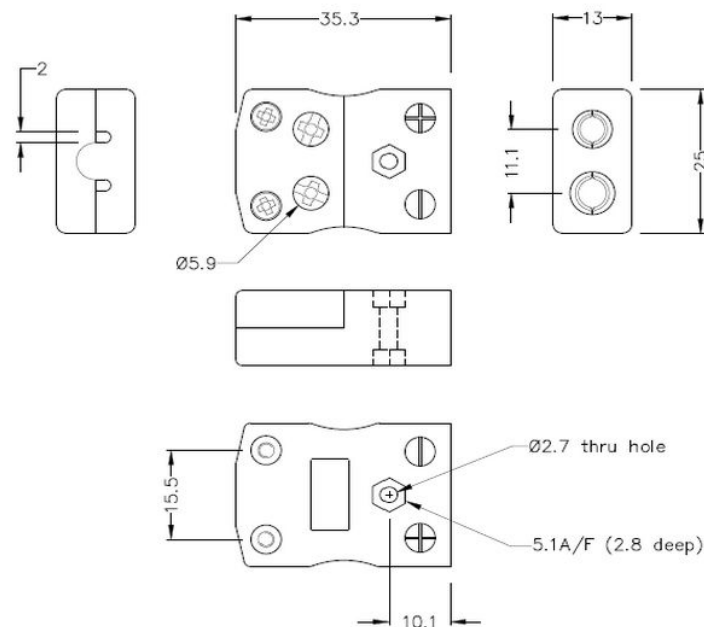
- Easy 'jab-in' connection for rapid termination
- Contacts are polarised to prevent incorrect connection



Specification

Sensor Type	K
Connector Size	Standard
Connector Type	Quick Wire Socket
Colour	Yellow
Max. Temperature	220 °C
+Positive Contact	NiCr
-Negative Contact	NiAl
Standards Met	BS EN 50212:1997; RoHS

Drawing



Standard in-line Socket - Quick Wire
(dimensions in mm)

Art. Nr.
RND 410-00206